

# EMPOWER LACE

by Rosemary {Romi} Hill



**empower lace** is inspired by the emPower People 2020 craftivism movement and their purple cowl. I hope you will knit this cowl (or one of the others) and wear it to vote in every election!



*Thank you for supporting indie knitwear design!*

*You can contact the designer at*

*help@designsbyromi.com or get assistance and friendship on the @Romi's Studio Ravelry forum.*

*Use hashtags #romihill #romiphyle or*

*#empowerlace to connect on social media 📸*

*Find Romi!*

*Instagram and Twitter: RomiDesigns*

*Facebook: Designs by Romi*

*YouTube: Designs by Romi*

*Ravelry: Romi*



09082020

**SIZE** medium

**MEASUREMENTS** Upper Edge Circumference: 34 inches/approx 86 cm  
Depth: 19 inches/approx 48 cm

**MATERIALS** Shown: Jill Draper Makes Stuff Rockwell [100% Cormo-Merino crossbred wool; 280 yards/4 oz (256m)/113g]; color: Amaranthine, one skein

1 - set: US #8/5mm straight or 24-inch circular needles

stitch markers; blocking wires; t-pins; tapestry needle

17 sts/22 rows = 4"/10cm in Chart B stitch **after gentle blocking**

**GAUGE** Every knitter's gauge is different; please check gauge! Exact gauge is not important. However, a looser gauge will result in the use of more yardage.

## PATTERN

### Set-up

Cast on 8 stitches.

Row 1: knit tbl

Row 2: repeat row 1

Row 3: ktbl 7 times, pm, M1, ktbl: 9 sts

Row 4: knit all sts tbl

Row 5: ktbl to marker, sl m, M1, ktbl to end: 10 sts

Row 6: knit all sts tbl

Work rows 5 and 6 an additional 4 times: 14 sts

### Cowl Body

Work **Chart A** a total of 1 time: 27 sts

Work **Chart B** a total of 6 times: 37 {47, 57, 67, 77, 87} sts

### Seaming Edge/Border

Row 1: ktbl 7 times, sl m, knit to 7 sts before end, ktbl 7 times (*Hint: on first time through border row, work knit stitches above yarnovers in previous RS row through back loop to tidy stitches.*)

Work Row 1 an additional 10 times.

Bind off on wrong side using stretchy method.

## Finishing

Wash using wool wash. Remove excess water from cowl and run blocking wires through straight edges, pinning out into shape shown in schematic. Allow to dry thoroughly, then unpin. Sew seaming edges together and weave in ends. Wear and VOTE!

## ABBREVIATIONS

**CO:** cast on

**k:** knit

**k2tog** (right leaning decrease): knit 2 stitches together

**ktbl/k1 tbl:** knit through back loop to twist stitch

**M1:** make stitch by lifting bar between sts in previous row; twist lifted bar; knit into resulting loop

**pm:** place marker

**psso:** pass slipped st(s) over

**p:** purl

**RS:** right side

**sl m:** slip marker

**ssk** (left leaning decrease): [slip 1 stitch knitwise] 2 times, slip both stitches back onto left needle, knit stitches together tbl

**sk2p:** sl 1 st knitwise, K2 tog, psso

**st(s):** stitch(es)

**tbl:** through back loop

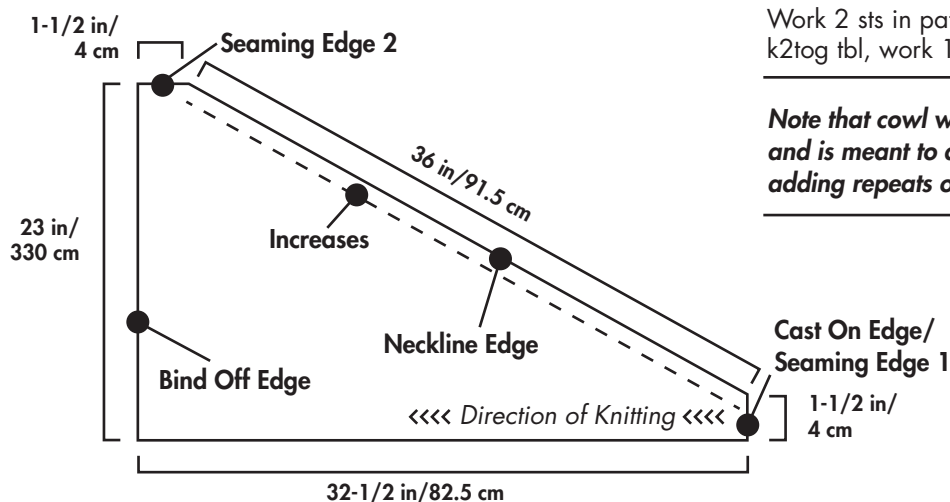
**WS:** wrong side

**YO:** yarnover


## STRETCHY BIND-OFF

Work 2 sts in pattern, [replace both sts on left needle, k2tog tbl, work 1 st in pattern] to end. Fasten off.

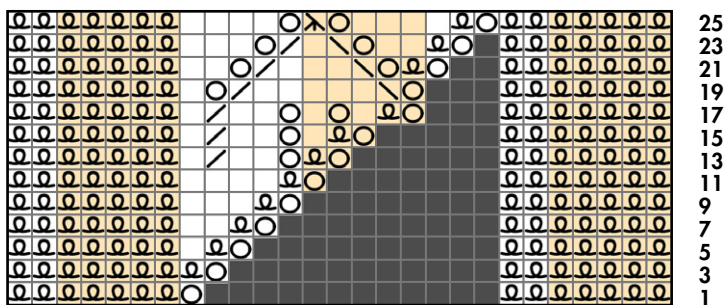
*Note that cowl will be quite loose around the neck and is meant to drape. Adjust size by omitting or adding repeats of Chart B.*



The white and yellow shading in the charts marks off squares in increments of 5, going from right to left.

<p><b>Even numbered rows</b></p> 	<p><b>Wrongside rows chart</b> written instructions:</p> <p>ktbl 7 times, purl to 7 sts before end, ktbl 7 times</p>
--	--

**Chart A - work 1 time (shows only RS rows)**



KEY TO CHART SYMBOLS					
■	no stitch	/	k2tog	○	YO
□	k	\	ssk	↗	sk2p
—	p	⓪	k1 tbl	M	M1

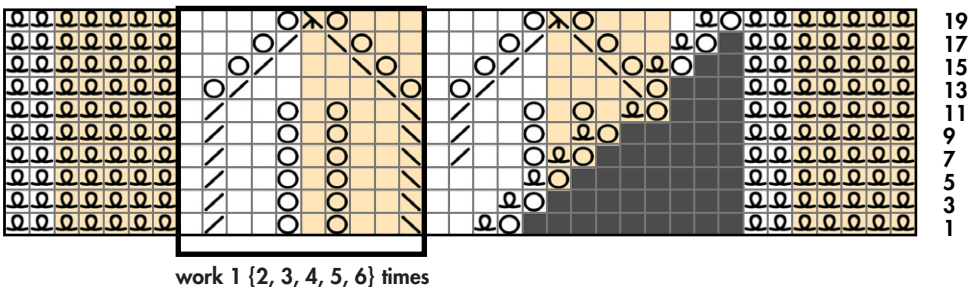
**Chart A** alternate written instructions:

Row 1: k1 tbl 7 times, sl m, YO, k1 tbl 7 times  
 Row 2 and all other WS rows through 26: k1 tbl 7 times, purl to marker, sl m, k1 tbl 7 times  
 Row 3: k1 tbl 7 times, sl m, YO, k1 tbl 8 times  
 Row 5: k1 tbl 7 times, sl m, YO, k1 tbl, k1, k1 tbl 7 times  
 Row 7: k1 tbl 7 times, sl m, YO, k1 tbl, k2, k1 tbl 7 times  
 Row 9: k1 tbl 7 times, sl m, YO, k1 tbl, k3, k1 tbl 7 times  
 Row 11: k1 tbl 7 times, sl m, YO, k1 tbl, k4, k1 tbl 7 times  
 Row 13: k1 tbl 7 times, sl m, YO, k1 tbl, YO, k2, k2tog, k1, k1 tbl 7 times  
 Row 15: k1 tbl 7 times, sl m, YO, k1 tbl, k1, YO, k2,

k2tog, k1, k1 tbl 7 times  
 Row 17: k1 tbl 7 times, sl m, YO, k1 tbl, k1, YO, k1, YO, k2, k2tog, k1, k1 tbl 7 times  
 Row 19: k1 tbl 7 times, sl m, YO, ssk, k5, k2tog, YO, k1, k1 tbl 7 times  
 Row 21: k1 tbl 7 times, sl m, YO, k1 tbl, YO, ssk, k3, k2tog, YO, k2, k1 tbl 7 times  
 Row 23: k1 tbl 7 times, sl m, YO, k1 tbl, k2, YO, ssk, k1, k2tog, YO, k3, k1 tbl 7 times  
 Row 25: k1 tbl 7 times, sl m, YO, k1 tbl, k4, YO, sk2p, YO, k4, k1 tbl 7 times

27 sts

**Chart B - work 6 times (shows only RS rows)**



**Chart B** alternate written instructions (work chart 6 times):

Row 1: k1 tbl 7 times, sl m, YO, k1 tbl, k2, [ssk, k2, YO, k1, YO, k2, k2tog, k1] 1 {2, 3, 4, 5, 6} time{s}, k1 tbl 7 times  
 Row 2 and all other WS rows through 20: k1 tbl 7 times, purl to marker, sl m, k1 tbl 7 times  
 Row 3: k1 tbl 7 times, sl m, YO, k1 tbl, k3, [ssk, k2, YO, k1, YO, k2, k2tog, k1] 1 {2, 3, 4, 5, 6} time{s}, k1 tbl 7 times  
 Row 5: k1 tbl 7 times, sl m, YO, k1 tbl, k4, [ssk, k2, YO, k1, YO, k2, k2tog, k1] 1 {2, 3, 4, 5, 6} time{s}, k1 tbl 7 times  
 Row 7: k1 tbl 7 times, sl m, YO, k1 tbl, YO, k2, k2tog, k1, [ssk, k2, YO, k1, YO, k2, k2tog, k1] 1 {2, 3, 4, 5, 6} time{s}, k1 tbl 7 times

Row 9: k1 tbl 7 times, sl m, YO, k1 tbl, k1, YO, k2, k2tog, k1, [ssk, k2, YO, k1, YO, k2, k2tog, k1] 1 {2, 3, 4, 5, 6} time{s}, k1 tbl 7 times  
 Row 11: k1 tbl 7 times, sl m, YO, k1 tbl, k1, YO, k1, YO, k2, k2tog, k1, [ssk, k2, YO, k1, YO, k2, k2tog, k1] 1 {2, 3, 4, 5, 6} time{s}, k1 tbl 7 times  
 Row 13: k1 tbl 7 times, sl m, [YO, ssk, k5, k2tog, YO, k1] 2 {3, 4, 5, 6, 7} times, k1 tbl 7 times  
 Row 15: k1 tbl 7 times, sl m, YO, k1 tbl, YO, ssk, k3, k2tog, YO, k2, [k1, YO, ssk, k3, k2tog, YO, k2] 1 {2, 3, 4, 5, 6} time{s}, k1 tbl 7 times  
 Row 17: k1 tbl 7 times, sl m, YO, k1 tbl, [k2, YO, ssk, k1, k2tog, YO, k3] 2 {3, 4, 5, 6, 7} times, k1 tbl 7 times  
 Row 19: k1 tbl 7 times, sl m, YO, k1 tbl, k1, [k3, YO, sk2p, YO, k4] 2 {3, 4, 5, 6, 7} times, k1 tbl 7 times

37 {47, 57, 67, 77, 87} sts